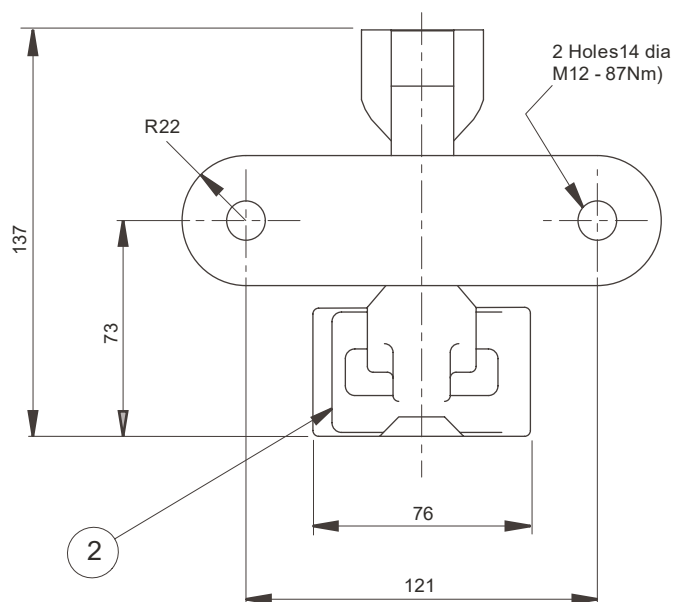
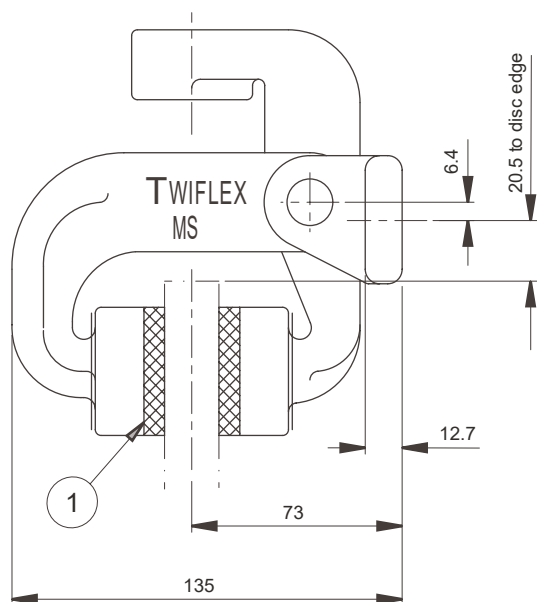


## MS Disc Brake Caliper



**Caliper Part Number. 6780277**

**Caliper part number. 6780842 for K and L Thrusters**

|                    |                                      |
|--------------------|--------------------------------------|
| Weight             | 1.5 kg.                              |
| Pad wear allowance | 8mm                                  |
| Total pad area     | 58cm (2 Pads)                        |
| Pad dimensions new | 63.5 x 46 x 12.7 thick.              |
| Pad material       | Asbestos-free high friction material |

| Available Spares |              |          |
|------------------|--------------|----------|
| Item             | Component    | Part No. |
| 1                | Pad Assembly | 780123   |
| 2                | Spring Clip  | 7900024  |

Twiflex Disc Brakes must be used with Twiflex asbestos free brake pads.

The use of any other brake pads will invalidate the warranty.

Twiflex Limited reserves the right to modify or change the design without prior notice.

# MS Disc Brake Caliper

## General Description

The MS series of disc brake calipers are used with brake disc 12.7mm thick. Normally one or two units will be used per disc but the number may be increased, depending on disc size. The brake units can be positioned at any angle around the periphery of the disc, but ideally they should be mounted horizontally ( in 3 or 9 o'clock positions ) in relation to the disc.

| Brake | Description                             | Data Sheet | Maximum Braking Force - kN |
|-------|-----------------------------------------|------------|----------------------------|
| MSA   | Pneumatically applied - Spring released | 1501       | 2.76                       |
| MSD   | Pneumatically applied - Spring released | 1502       | 1.44                       |
| MSE   | Pneumatically applied - Spring released | 1503       | 0.29                       |
| MSF   | Mechanically applied - Lever operated   | 1504       | 1.88                       |
| MSG   | Pneumatically applied - Spring released | 1505       | 0.76                       |
| MSH   | Mechanically applied - Hand operated    | 1506       | 1.01                       |
| MSK   | Spring applied - Pneumatically released | 1507       | 0.87, 1.74 and 2.6         |
| MSL   | Spring applied - Hydraulically released | 1508       | 0.87, 1.74 and 2.6         |

## Discs:

A range of standard discs of 12.7mm thick are available from Twiflex see Data Sheet DB5002. Minimum disc diameter for the MS caliper is 150mm

## Controllers:

Standard Twiflex Controllers are available for single or multi-caliper installations for use with electric, pneumatic and hydraulic signalling systems.

## Pad replacement:

To replace the pads, secure the installation to ensure safety. Ease out the pad springs and remove worn pads. Clean the disc and pad mounts with a suitable cleaning agent such as white spirit. Fit new pads. Replace pad springs.

For bedding-in and conditioning procedures see publication M1060

Health and Safety data sheet refer to DS 0500



This approval is in Accordance with  
Certificate number 850822  
Issue 04 June 2009 © Twiflex 2001 Issue 05

Tel: +44 (0)1453 750814  
Fax: +44 (0)1453 765320  
[www.howdon.co.uk](http://www.howdon.co.uk)  
[sales@howdon.co.uk](mailto:sales@howdon.co.uk)